



# Hamilton State School



## Strategic Plan



## ACADEMIC EXCELLENCE

---

### Beliefs:

- We are all learners.
- Academic excellence is demonstrated in in diverse ways.
- High quality teaching and learning happens by design.
- All students can improve and achieve their full potential.

### Strategies:

- Committing to collaborative and focused planning within Australian Curriculum.
- Embedding critical and creative pedagogy across all year levels.
- Acknowledging and celebrating excellence and improvement in all learners.
- Developing clear transition plans from Kindy to school and Primary School to High School.

### Measures:

- A-E data + N.
- NAPLAN.
- Internal diagnostic data.
- School opinion and internals surveys.

## COMMUNITY

---

### Beliefs:

- It takes a community to raise a child.
- We are connected to others through community.
- We value diversity and inclusivity as it enhances our connectedness.

### Strategies:

- Effective partnerships with parents, carers and external stakeholders.
- Connecting to local Hamilton community groups, including active participation in the Hamilton Hub.
- Connecting to local Aboriginal and Torres Strait Islander community.
- Celebrating the diverse and inclusive cultures of the Hamilton community.

### Measures:

- School opinion survey.
- An increase in parent and community involvement.
- Internal surveys.

## CO-CURRICULAR

---

### Beliefs:

- We are committed to a holistic and well rounded primary education experience (developing the ‘whole child’.)
- We are preparing students to become active and informed citizen in our changing global society.

### Strategies:

- Developing a critical and creative thinking lens.
- Using a range of engaging learning opportunities and experiences.
- Promoting The Arts, Languages Other Than English, Physical and Outdoor Education.
- Enhancing social and emotional wellbeing and promoting a growth mindset across the school community.

### Measures:

- School opinion survey.
- Internal surveys.
- Parent meetings.

## INNOVATION & CHANGE IN A GROWING SCHOOL

---

### Beliefs:

- We preserve our ‘Hamilton Identity’ as we grow.
- Change is an ongoing process and brings positive and lasting benefits, even when it is challenging.

### Strategies:

- Developing processes and procedures reflective of a growing school.
- Developing clear roles and responsibilities as it relates to communication between all members of the school community.

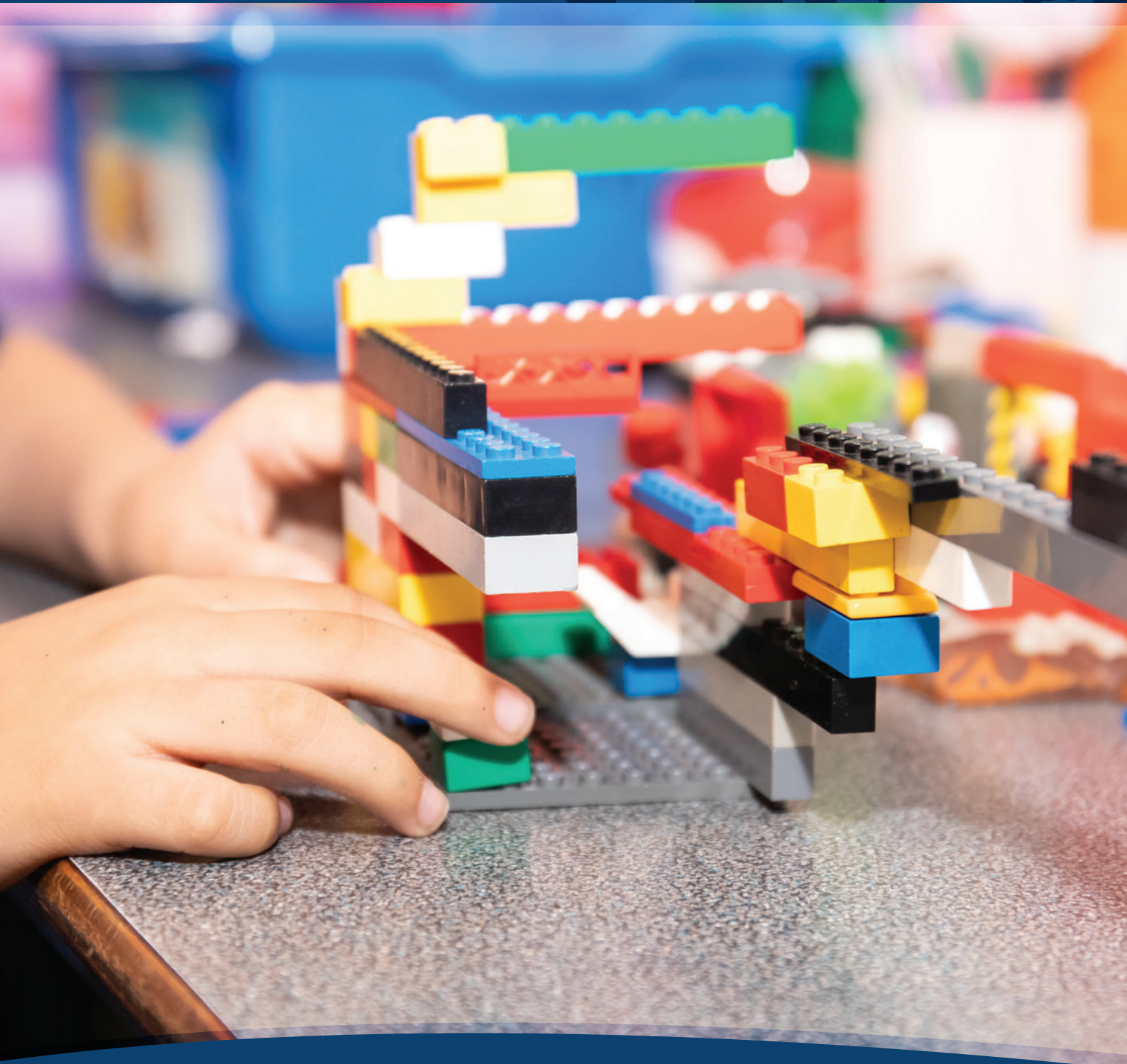
### Measures:

- School opinion survey.
- Evidence of consistency of practice across classes.

## Hamilton State School

71 Oxford Street,  
Hamilton QLD 4007

**Ph:** (07) 3361 6444



Find us on 

[www.hamiltonss.eq.edu.au](http://www.hamiltonss.eq.edu.au)